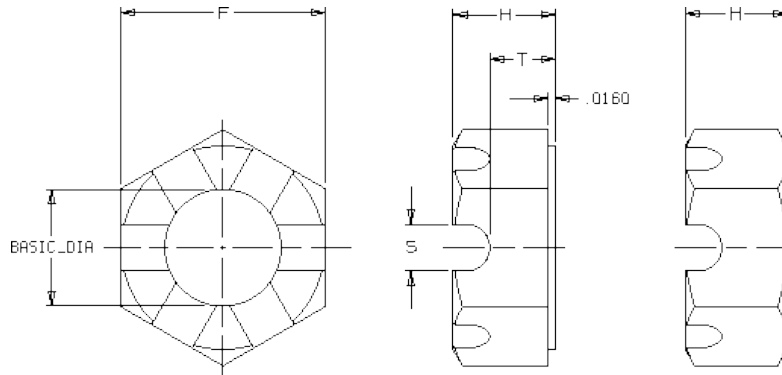




Cordova Bolt, Inc.

Hex Slotted Nuts Product Information

1.0 Dimensions: As per ASME B18.2.2.



| Nominal Size or Basic Major Diameter of Thread | F | | G | | H | | T | | S | |
|--|--------------------|-------|----------------------|-------|-----------|-------|---------------------|------|---------------|------|
| | Width Across Flats | | Width Across Corners | | Thickness | | Unslotted Thickness | | Width of Slot | |
| | Max | Min | Max | Min | Max | Min | Max | Min | Max | Min |
| 1/4 | 0.438 | 0.428 | 0.505 | 0.488 | 0.226 | 0.212 | 0.14 | 0.12 | 0.10 | 0.07 |
| 5/16 | 0.500 | 0.489 | 0.577 | 0.557 | 0.273 | 0.258 | 0.18 | 0.16 | 0.12 | 0.09 |
| 3/8 | 0.562 | 0.551 | 0.650 | 0.628 | 0.337 | 0.320 | 0.21 | 0.19 | 0.15 | 0.12 |
| 7/16 | 0.688 | 0.675 | 0.794 | 0.768 | 0.385 | 0.365 | 0.23 | 0.21 | 0.15 | 0.12 |
| 1/2 | 0.750 | 0.736 | 0.866 | 0.840 | 0.448 | 0.427 | 0.29 | 0.27 | 0.18 | 0.15 |
| 9/16 | 0.875 | 0.861 | 1.010 | 0.982 | 0.496 | 0.473 | 0.31 | 0.29 | 0.18 | 0.15 |
| 5/8 | 0.938 | 0.922 | 1.083 | 1.051 | 0.559 | 0.535 | 0.34 | 0.32 | 0.24 | 0.18 |
| 3/4 | 1.125 | 1.088 | 1.299 | 1.240 | 0.665 | 0.617 | 0.40 | 0.38 | 0.24 | 0.18 |
| 7/8 | 1.312 | 1.269 | 1.516 | 1.447 | 0.776 | 0.724 | 0.52 | 0.49 | 0.24 | 0.18 |
| 1 | 1.500 | 1.450 | 1.732 | 1.653 | 0.887 | 0.831 | 0.59 | 0.56 | 0.30 | 0.24 |
| 1-1/8 | 1.688 | 1.631 | 1.949 | 1.859 | 0.999 | 0.939 | 0.64 | 0.61 | 0.33 | 0.24 |
| 1-1/4 | 1.875 | 1.812 | 2.165 | 2.066 | 1.094 | 1.030 | 0.70 | 0.67 | 0.40 | 0.31 |
| 1-3/8 | 2.062 | 1.994 | 2.382 | 2.273 | 1.206 | 1.138 | 0.82 | 0.78 | 0.40 | 0.31 |
| 1-1/2 | 2.250 | 2.175 | 2.598 | 2.480 | 1.317 | 1.245 | 0.86 | 0.82 | 0.46 | 0.37 |

Disclaimer: The presented data is based off various industry standards. Cordova Bolt, Inc. strives to present up to date, accurate data. However Cordova Bolt, Inc. cannot be held liable for any errors or discrepancies within the presented information



Cordova Bolt, Inc.

5601 Dolly Avenue Buena Park CA 90621
(714) 739-7500 - (714) 994-2661-fax
www.cordovabolt.com



Cordova Bolt, Inc.

2.0 Proof Load SA J995

| Nominal Nut Size and Threads Per Inch | Proof Load PSI (UNC Threads Only) | | |
|---------------------------------------|-----------------------------------|---------|---------|
| | Grade 2 | Grade 5 | Grade 8 |
| 1/4-20 | 2,250 | 3,050 | 3,800 |
| 5/16-18 | 3,700 | 5,050 | 6,300 |
| 3/8-16 | 5,500 | 7,450 | 9,300 |
| 7/16-14 | 7,550 | 10,200 | 12,800 |
| 1/2-13 | 10,100 | 13,600 | 17,000 |
| 9/16-12 | 12,900 | 17,500 | 21,800 |
| 5/8-11 | 16,050 | 21,700 | 27,100 |
| 3/4-10 | 23,700 | 32,100 | 40,100 |
| 7/8-9 | 32,800 | 44,400 | 55,400 |
| 1-8 | 43,050 | 58,200 | 72,700 |
| 1-1/8-7 | 54,200 | 64,100 | 91,600 |
| 1-1/4-7 | 68,800 | 81,400 | 116,000 |
| 1-3/8-6 | 82,000 | 97,000 | 139,000 |
| 1-1/2-6 | 99,750 | 118,000 | 169,000 |

| Nominal Nut Size and Threads Per Inch | Proof Load PSI (UNF Threads Only) | | |
|---------------------------------------|-----------------------------------|---------|---------|
| | Grade 2 | Grade 5 | Grade 8 |
| 1/4-28 | 2,400 | 3,200 | 4,350 |
| 5/16-24 | 3,750 | 5,050 | 6,950 |
| 3/8-28 | 5,700 | 7,650 | 10,550 |
| 7/16-20 | 7,700 | 10,350 | 14,250 |
| 1/2-20 | 10,400 | 13,900 | 19,200 |
| 9/16-18 | 13,200 | 17,650 | 24,350 |
| 5/8-18 | 16,650 | 22,250 | 30,700 |
| 3/4-16 | 24,250 | 32,450 | 44,750 |
| 7/8-14 | 33,100 | 44,300 | 61,100 |
| 1-12 | 43,100 | 57,700 | 79,600 |
| 1-1/8-12 | 55,650 | 64,200 | 102,700 |
| 1-1/4-12 | 69,750 | 80,500 | 128,750 |
| 1-3/8-12 | 85,500 | 98,600 | 157,800 |
| 1-1/2-12 | 102,750 | 118,600 | 189,700 |

Disclaimer: The presented data is based off various industry standards. Cordova Bolt, Inc. strives to present up to date, accurate data. However Cordova Bolt, Inc. cannot be held liable for any errors or discrepancies within the presented information



Cordova Bolt, Inc.

5601 Dolly Avenue Buena Park CA 90621
(714) 739-7500 - (714) 994-2661-fax
www.cordovabolt.com



Cordova Bolt, Inc.

| Nominal Nut Size and Threads Per Inch | Proof Load PSI (UNF Threads Only) | | |
|---------------------------------------|-----------------------------------|---------|---------|
| | Grade 2 | Grade 5 | Grade 8 |
| 1-8 | 39,400 | 58,200 | 72,700 |
| 1-1/8-8 | 51,350 | 66,350 | 94,800 |
| 1-1/4-8 | 65,000 | 84,000 | 120,000 |
| 1-3/8-8 | 80,150 | 103,550 | 147,950 |
| 1-1/2-8 | 97,000 | 125,350 | 179,050 |

Disclaimer: The presented data is based off various industry standards. Cordova Bolt, Inc. strives to present up to date, accurate data. However Cordova Bolt, Inc. cannot be held liable for any errors or discrepancies within the presented information



Cordova Bolt, Inc.

5601 Dolly Avenue Buena Park CA 90621
(714) 739-7500 - (714) 994-2661-fax
www.cordovabolt.com