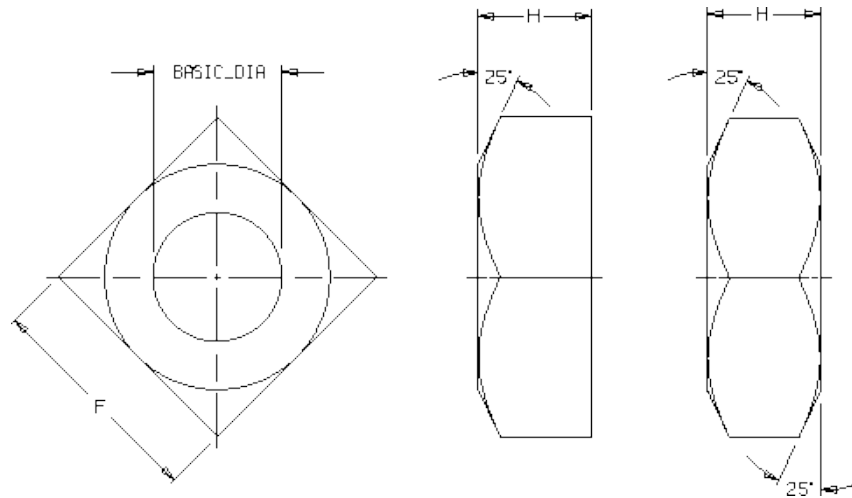




Cordova Bolt, Inc.

Heavy Square Nuts Product Information

1.0 Dimensions: As per ASME B18.2.2.



Nominal Size or Basic Major Diameter of Thread	F		G		H	
	Width Across Flats		Width Across Corners		Thickness	
	Max	Min	Max	Min	Max	Min
1/4	0.500	0.488	0.707	0.640	0.266	0.218
5/16	0.562	0.546	0.795	0.720	0.330	0.280
3/8	0.688	0.669	0.973	0.889	0.393	0.341
7/16	0.750	0.728	1.060	0.970	0.456	0.403
1/2	0.875	0.850	1.237	1.137	0.520	0.464
5/8	1.062	1.031	1.503	1.386	0.647	0.587
3/4	1.250	1.212	1.768	1.635	0.774	0.710
7/8	1.438	1.394	2.033	1.884	0.901	0.833
1	1.625	1.575	2.298	2.132	1.028	0.956
1-1/8	1.812	1.756	2.563	2.381	1.155	1.079
1-1/4	2.000	1.938	2.828	2.631	1.282	1.187
1-3/8	2.188	2.119	3.094	2.879	1.409	1.310
1-1/2	2.375	2.300	3.359	3.128	1.536	1.433

Disclaimer: The presented data is based off various industry standards. Cordova Bolt, Inc. strives to present up to date, accurate data. However Cordova Bolt, Inc. cannot be held liable for any errors or discrepancies within the presented information



Cordova Bolt, Inc.

5601 Dolly Avenue Buena Park CA 90621
(714) 739-7500 - (714) 994-2661-fax
www.cordovabolt.com



Cordova Bolt, Inc.

2.0 Proof Load SAE J995

Nominal Nut Size and Threads Per Inch	Proof Load PSI (UNC Threads Only)		
	Grade 2	Grade 5	Grade 8
1/4-20	3,200	4,250	5,250
5/16-18	5,200	6,950	8,650
3/8-16	7,750	10,300	12,800
7/16-14	10,600	14,100	17,500
1/2-13	14,200	18,900	23,400
9/16-12	18,150	24,200	30,000
5/8-11	22,600	30,100	37,300
3/4-10	33,300	44,400	55,100
7/8-9	46,050	61,400	76,200
1-8	60,450	80,600	100,000
1-1/8-7	76,300	88,500	126,000
1-1/4-7	96,900	112,000	160,000
1-3/8-6	115,500	134,000	191,000
1-1/2-6	140,500	163,000	232,000

Nominal Nut Size and Threads Per Inch	Proof Load PSI (UNF Threads Only)		
	Grade 2	Grade 5	Grade 8
1/4-28	3,300	4,400	5,460
5/16-24	5,200	7,000	8,700
3/8-24	7,900	10,550	13,170
7/16-20	10,700	14,250	17,805
1/2-20	14,400	19,200	23,985
9/16-18	18,250	24,350	30,450
5/8-18	23,000	30,700	38,400
3/4-16	33,550	44,750	55,950
7/8-14	45,800	61,100	76,350
1-12	59,650	79,550	99,450
1-1/8-12	77,050	89,900	128,400
1-1/4-12	96,550	112,650	160,950
1-3/8-12	118,350	138,100	197,250
1-1/2-12	142,300	166,000	237,150

Disclaimer: The presented data is based off various industry standards. Cordova Bolt, Inc. strives to present up to date, accurate data. However Cordova Bolt, Inc. cannot be held liable for any errors or discrepancies within the presented information



Cordova Bolt, Inc.

5601 Dolly Avenue Buena Park CA 90621
(714) 739-7500 - (714) 994-2661-fax
www.cordovabolt.com



Cordova Bolt, Inc.

Nominal Nut Size and Threads Per Inch	Proof Load PSI (UN 8 Threads Only)		
	Grade 2	Grade 5	Grade 8
1-8	60,600	80,600	100,000
1-1/8-8	79,000	91,650	130,350
1-1/4-8	100,000	116,000	165,000
1-3/8-8	123,300	143,050	203,450
1-1/2-8	149,200	173,050	246,200

Disclaimer: The presented data is based off various industry standards. Cordova Bolt, Inc. strives to present up to date, accurate data. However Cordova Bolt, Inc. cannot be held liable for any errors or discrepancies within the presented information



Cordova Bolt, Inc.

5601 Dolly Avenue Buena Park CA 90621
(714) 739-7500 - (714) 994-2661-fax
www.cordovabolt.com