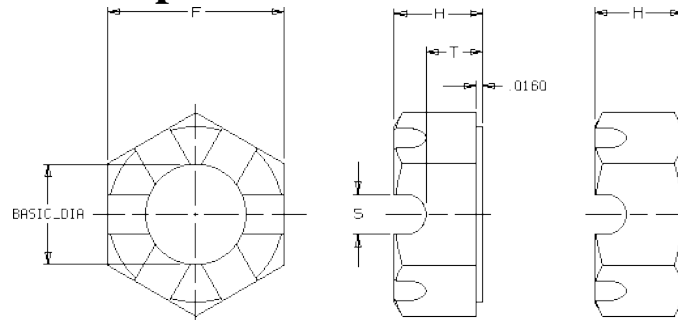




# Cordova Bolt, Inc.

## Heavy Hex Slotted Nuts Product Information

### 1.0 Dimensions: As per ASME B18.2.2.



Nominal Size or Basic Major Diameter of Thread	F		G		H		T		S	
	Width Across Flats		Width Across Corners		Thickness		Unslotted Thickness		Width of Slot	
	Max	Min	Max	Min	Max	Min	Max	Min	Max	Min
1/4	0.500	0.488	0.577	0.556	0.250	0.218	0.15	0.13	0.10	0.07
5/16	0.562	0.546	0.650	0.622	0.314	0.280	0.21	0.19	0.12	0.09
3/8	0.688	0.669	0.794	0.763	0.377	0.341	0.24	0.22	0.15	0.12
7/16	0.750	0.728	0.866	0.830	0.441	0.403	0.28	0.26	0.15	0.12
1/2	0.875	0.850	1.010	0.969	0.504	0.464	0.34	0.32	0.18	0.15
9/16	0.938	0.909	1.083	1.037	0.568	0.526	0.37	0.35	0.18	0.15
5/8	1.062	1.031	1.227	1.175	0.631	0.587	0.40	0.38	0.24	0.18
3/4	1.250	1.212	1.443	1.382	0.758	0.710	0.49	0.47	0.24	0.18
7/8	1.438	1.394	1.660	1.589	0.885	0.833	0.62	0.59	0.24	0.18
1	1.625	1.575	1.876	1.796	1.012	0.956	0.72	0.69	0.30	0.24
1-1/8	1.812	1.756	2.093	2.002	1.139	1.079	0.78	0.75	0.33	0.24
1-1/4	2.000	1.938	2.309	2.209	1.251	1.187	0.86	0.83	0.40	0.31
1-3/8	2.188	2.119	2.526	2.416	1.378	1.310	0.99	0.95	0.40	0.31
1-1/2	2.375	2.300	2.742	2.622	1.505	1.433	1.05	1.01	0.46	0.37
1-3/4	2.750	2.662	3.175	3.035	1.759	1.679	1.24	1.20	0.52	0.43
2	3.125	3.025	3.608	3.449	2.013	1.925	1.43	1.38	0.52	0.43
2-1/4	3.500	3.388	4.041	3.862	2.251	2.155	1.67	1.62	0.52	0.43
2-1/2	3.875	3.750	4.474	4.275	2.505	2.401	1.79	1.74	0.64	0.55
2-3/4	4.250	4.112	4.907	4.688	2.759	2.647	2.05	1.99	0.64	0.55
3	4.625	4.475	5.340	5.102	3.013	2.893	2.23	2.17	0.71	0.62
3-1/4	5.000	4.838	5.774	5.515	3.252	3.124	2.47	2.41	0.71	0.62
3-1/2	5.375	5.200	6.207	5.928	3.506	3.370	2.72	2.65	0.71	0.62
3-3/4	5.750	5.562	6.640	6.431	3.760	3.616	2.97	2.90	0.71	0.62
4	6.125	5.925	7.073	6.755	4.014	3.862	3.22	3.15	0.71	0.62

Disclaimer: The presented data is based off various industry standards. Cordova Bolt, Inc. strives to present up to date, accurate data. However Cordova Bolt, Inc. cannot be held liable for any errors or discrepancies within the presented information



**Cordova Bolt, Inc.**

5601 Dolly Avenue Buena Park CA 90621  
(714) 739-7500 - (714) 994-2661-fax  
www.cordovabolt.com