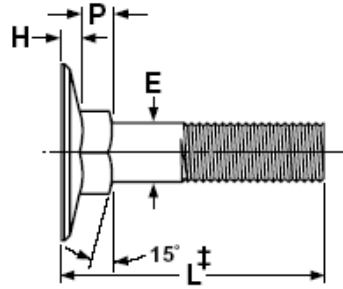
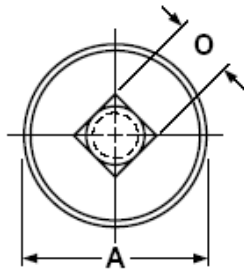




Cordova Bolt, Inc.

Countersunk Head Elevator Bolt Product Information

1.0 Dimensions: As per ASME B18.5



Nominal Size or Basic Bolt Diameter	E		A			C	F	H	
	Body Diameter		Head Diameter			Head Angle	Flat on Min Diameter Head	Head Height	
			Max Edge Sharp	Min Edge Sharp	Min Edge Flat				
	Max	Min				Ref	Max	Max	Min
No. 10	0.199	0.182	0.790	0.750	0.740	9	0.082	0.082	0.062
1/4	0.260	0.237	1.008	0.969	0.938	9	0.098	0.098	0.078
5/16	0.324	0.298	1.227	1.188	1.157	9	0.114	0.114	0.094
3/8	0.388	0.360	1.352	1.312	1.272	11	0.145	0.145	0.125
7/16	0.452	0.421	1.477	1.438	1.397	13	0.176	0.176	0.156
1/2	0.515	0.483	1.602	1.562	1.522	12	0.176	0.176	0.156

Nominal Size or Basic Bolt Diameter	O		AC	p		S	Q	R
	Square Width		Square Across Corners	Square Depth		Square Corner Height	Corner Radius on Square	Fillet Radius
	Max	Min	Min	Max	Min	Min	Max	Max
No. 10	0.210	0.185	0.236	0.125	0.094	0.131	0.031	0.031
1/4	0.280	0.245	0.321	0.219	0.188	0.228	0.031	0.031
5/16	0.342	0.307	0.408	0.250	0.219	0.262	0.031	0.031
3/8	0.405	0.368	0.481	0.250	0.219	0.287	0.047	0.031
7/16	0.468	0.431	0.571	0.281	0.250	0.336	0.047	0.031
1/2	0.530	0.492	0.657	0.281	0.250	0.324	0.047	0.031

Disclaimer: The presented data is based off various industry standards. Cordova Bolt, Inc. strives to present up to date, accurate data. However Cordova Bolt, Inc. cannot be held liable for any errors or discrepancies within the presented information



Cordova Bolt, Inc.

5601 Dolly Avenue Buena Park CA 90621
(714) 739-7500 - (714) 994-2661-fax
www.cordovabolt.com