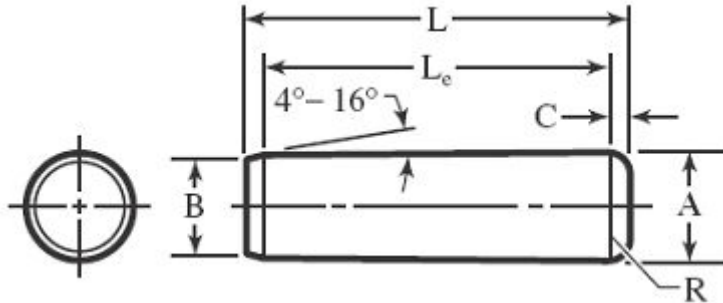




# Cordova Bolt, Inc.

## Dowel Pin Standard Series Product Information

### 1.0 Dimensions: As per ASME B18.8.2.



Nominal Size or Nominal Pin Diameter	A			B		C
	Standard Series Pin Diameter			Point Diameter		Crown Height
	Basic	Max	Min	Max	Min	Max
1/16	0.0627	0.0628	0.0626	0.058	0.048	0.020
5/64	0.0738	0.0784	0.0782	0.074	0.064	0.026
3/32	0.0940	0.0941	0.0939	0.089	0.079	0.031
1/8	0.1252	0.1253	0.1251	0.120	0.110	0.041
5/32	0.1564	0.1565	0.1563	0.150	0.140	0.052
3/16	0.1877	0.1878	0.1876	0.180	0.170	0.062
1/4	0.2502	0.2503	0.2501	0.240	0.230	0.083
5/16	0.3127	0.3128	0.3126	0.302	0.290	0.104
3/8	0.3752	0.3753	0.3751	0.365	0.350	0.125
7/16	0.4377	0.4378	0.4376	0.424	0.409	0.146
1/2	0.5002	0.5003	0.5001	0.486	0.471	0.167
5/8	0.6252	0.6253	0.6251	0.611	0.595	0.208
3/4	0.7502	0.7503	0.7501	0.735	0.715	0.250
7/8	0.8752	0.8753	0.8751	0.860	0.840	0.293
1	1.0002	1.0003	1.0001	0.980	0.960	0.333

Disclaimer: The presented data is based off various industry standards. Cordova Bolt, Inc. strives to present up to date, accurate data. However Cordova Bolt, Inc. cannot be held liable for any errors or discrepancies within the presented information



**Cordova Bolt, Inc.**

5601 Dolly Avenue Buena Park CA 90621  
(714) 739-7500 - (714) 994-2661-fax  
www.cordovabolt.com